



THE MOUTH OF THE BEAST
THE MOUTH OF THE BEAST

EXHIBITION OPEN

11am until 6pm until 15th June 2016, Space39, level 2, 39 Little Collins Street, Melbourne

CATALOGUE

The Mouth of the Beast at Space 39, level 2, 39, Little Collins Street Melbourne.

June 2nd - 15th 2016.

Exhibition includes sculpture by JOELLE MAYBERRY and drawings by TIFFANY TITSHALL

Contact: Tiffany Titshall | tiffanytitshall@gmail.com | www.tiffanytitshall.com

All works in this catalogue ©Copyright Tiffany Titshall 2016.

ACKNOWLEDGEMENTS (real and mythical beasts)

Special thanks to Caleb Cluff, Jane Burton, Joelle Mayberry, Heidi Yardley, Dan Mathews, Jayne Newgreen, Greg Von Menge, Oleh Witer, Chris Meddows-Taylor, Frank Apostoli, Charles Zuma & the beasts.

IN THE MOUTH OF THE BEAST

"At the basis of the whole modern view of the world lies the illusion that the so-called laws of nature are the explanations of natural phenomena. So people stop short at natural laws as at something unassailable, as did the ancients at God and Fate... We make to ourselves pictures of facts."

- Ludwig Wittgenstein

The act of making a picture has always been an act of transgression, pouring a thought once private into the public realm. But what is transgression? What is the point at which 'going beyond' becomes the pornographic, the voyeuristic, the iconoclastic? Do these terms have any currency now?

These images and sculptures are raw. They hide nothing. We are watching, and we are being watched. Open mouths, open vessels, dark and tempting. The emptiness and its accompanying silence allows us to release deeper, carnal responses. We seek our native tongue in the mouth of the beast.

We see a girl. Is she fleeing? Dancing? Masked? Disfigured? Is she, indeed, human?
Is she the object of a male desire, or the creation?

A man kneels on the ground, around his neck a human skull on a chain. Is he a shaman or a captive? Is he invoking a spirit or awaiting his fate?

And the beasts. Uninterested in our gaze, devoid of care beyond the moment of copulation, we see the act in its violence and beauty. Death is a possibility, it is never far from the frame.

We are the watchers, the almost-casual onlookers. But these works solicit the deviant thought, the stolen glance. We dress our thoughts in the cloth of reason and natural law but inwardly desire them to be ripped away; to see the displays of muscle and sinew for what they are - lust in action.

Lust in action. The peasant, the tribespeople, the countryman live in the immediate world of husbandry, the day-to-day business of mating stock and breeding. Their taboos, their superstitions are not ours. Their invocations implore the rising of the seed, the the transfer of semen, the successful coupling. They know the act in its entirety, the spider devouring its partner, the intricate, brutal, bursting bee endophallus, the tugging sheep, the roving bitch in heat, the rampant bull.

In these works seduction and courtship take second place to violent displays of power and dark incantations to the unseen. It is a serenade to sexuality.

"Whereas we believe lightning to be released as a result of the collision of clouds, they believe that the clouds collide so as to release lightning: for as they attribute all to deity, they are led to believe not that things have a meaning insofar as they occur, but rather that they occur because they must have a meaning."

- Seneca on the Etruscan system of belief

- Caleb Cluff



Courting Desire, 2016

charcoal on primed paper
(310 x 260mm) 505 x 445mm framed

\$630 SOLD



Too fast for shadows, 2016

charcoal on primed paper
(310 x 265mm) 505 x 445mm framed

\$630



*once mermaids mocked your ships with wet
and scarlet lips and fish dark difficult hips, 2016*

charcoal on primed paper
(315 x 260mm) 505 x 445mm framed

\$630



if you could say that stillness meant surrender, 2016

charcoal on primed paper
(450 x 535mm) 640 x 715mm framed

\$1100 SOLD



All thoughts are prey to some beast, 2016

charcoal on primed paper
(560 x 760mm) 690 x 880mm framed

\$1800



Peep Show, 2016

charcoal on primed paper
(330 x 400mm) 520 x 580mm framed

\$650



towards the studded male in a bent, midnight blaze, 2016

charcoal on primed paper
(330 x 400mm) 520 x 580mm framed

\$650



out-of-doors, 2016

charcoal on primed paper
(330 x 400mm) 520 x 580mm framed

\$650



*and the slit moon only emphasised how blood must flow
and teeth must grip, 2016*

charcoal on primed paper
1007 x 815mm unframed

\$1600 SOLD



Courting the beast, 2016

charcoal on primed paper
(305 x 265mm) 505 x 445mm framed

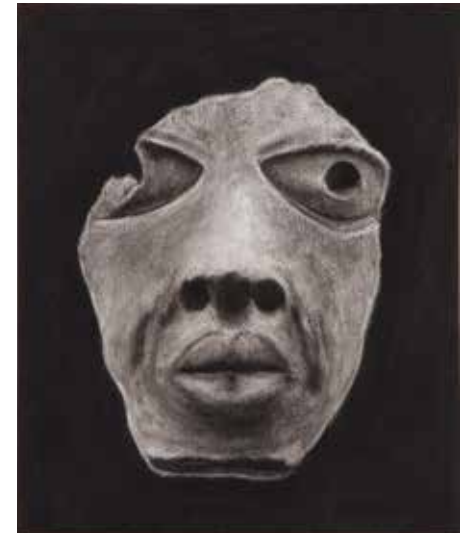
\$630 SOLD



Familiar, 2016

charcoal on primed paper
(305 x 265mm) 505 x 445mm framed

\$630 SOLD



Veiled Gaze, 2016

charcoal on primed paper
(305 x 265mm) 505 x 445mm framed

\$630



The beast unbridled, 2016

charcoal on primed paper
(560 x 760mm) 690 x 880mm framed

\$1800



Love Play, 2016

charcoal on primed paper
(560 x 760mm) 690 x 880mm framed

\$1800



Their lonely betters, 2016

charcoal on primed paper
(560 x 760mm) 690 x 880mm framed

\$1800



In looks and lips that can no more dissemble, 2016

charcoal on primed paper
(560 x 760mm) 690 x 880mm framed

\$1800



The seed is struck, the pleasure's done, 2016

charcoal on primed paper
(560 x 760mm) 690 x 880mm framed

\$1800



The Mouth of the Beast, 2016

charcoal on primed paper
550mm diameter unframed

\$900 SOLD



To trot with a loud mate the haybeds of a mile, 2016
(background is now darker than in this image as in the inset image)

charcoal on primed paper
560 x 760mm unframed (full bleed image)

\$1500



and men in bed with love and fear, 2016

Black gesso, white pencil and conte on paper
760 x 560mm unframed (image smaller within large margins)

\$1000

STOCK ROOM

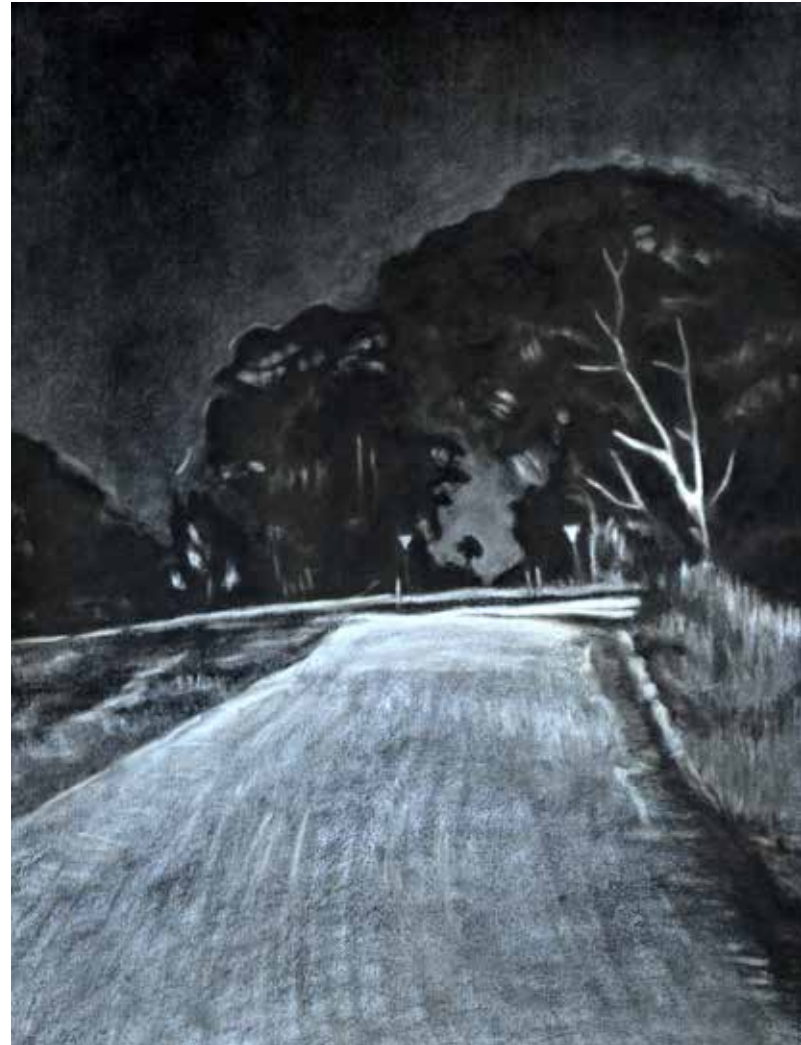


A brute land in the cool top of the country days, 2016

charcoal on primed paper
560 x 760mm unframed (full bleed)

\$1300

Clearing, 2013/16
Ink and charcoal on primed paper
760 x 570mm unframed (photograph of the work taken by me)
\$1200 (unframed)



THE MOUTH OF THE BEAST

Level 2, 39 Little Collins Street, Melbourne

Exhibition runs June 2nd - 15th 2016 Open daily 11am until 6pm

JOELLE MAYBERRY & TIFFANY TITSHALL Sculpture and charcoal works on paper

tiffanytitshall.com | tiffanytitshall@gmail.com